



Bedfordshire
county council

Children's Services

Your Guide to Holiday Schemes in Bedfordshire

School's Out

2007/08



INFORM
0-19

Information on holiday clubs and play/sport activities.
Also includes schemes for children with additional needs.

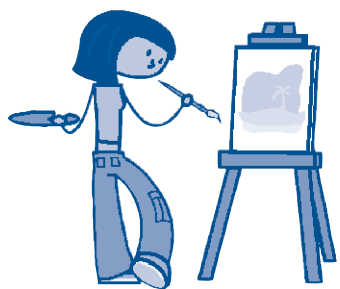


INFORM 0-19

Information service
for parents and carers
of children and young
people aged 0-19 years

- Childcare and early years services
- Sports, leisure and holiday activities
- Local support services





School's Out

2007/08



Welcome to the 'School's Out Holiday Booklet 2007/08' brought to you by INFORM 0-19.

This booklet brings together information on a variety of holiday care schemes and activities, enabling parents to balance work commitments with the school holidays. We hope you find the booklet useful in finding suitable childcare for your child during the school holidays.

If a scheme is registered with the Office for Standards in Education (Ofsted) then you may be able to claim the childcare element of Working Tax Credit, or use employer supported childcare vouchers. Schemes registered with Ofsted will display the following symbols. ✓

Bedfordshire County Council is committed to developing inclusive childcare and offers funding to encourage, support and enable schemes to offer childcare places to children with an additional need or disability. For more information please telephone 01234 228120.

Schemes displaying the following symbol have indicated that they have the capacity to take a child with an additional need or disability. 

What about a registered childminder?

Remember you also have the option of using a registered childminder to provide care for your child over the school holidays. Call INFORM 0-19 on 0800 023 2057 for a list of childminders that cover the school holidays in your area.

Just looking for fun activities for your children?

Then phone INFORM 0-19 on 0800 023 2057 for our supplementary 'Summer 2007 Holiday Activities' leaflet that details holiday activities or short courses for children and young people in Bedfordshire. This will be available in July 2007.

Comments

If you have any comments regarding the booklet or childcare in the area you live please write to:

INFORM 0-19 Manager
INFORM 0-19
Bedfordshire County Council
County Hall
Cauldwell St
Bedford
MK42 9AP

Telephone: 0800 023 2057
Email: inform0-19@bedscc.gov.uk

Disclaimer

INFORM 0-19 cannot be held responsible for any changes to or cancellations of holiday schemes that occur after publication.

CONTENTS

School Term Dates5
 Top Tips for Holiday Fun5

ADDITIONAL NEEDS

Autism Bedfordshire - Luton6
 Autism Bedfordshire - Bromham6
 Bedford Mencap Summer Playscheme7
 FUN Holiday Club7
 Hillcrest Out of School Club8
 Lea Manor Friendship Scheme8
 National Deaf Children's Society9
 Skools Out Playscheme9
 Sunshine Playscheme10

NORTH BEDFORDSHIRE

4 Real Kidz Club11
 Acorn Holiday Group11
 Barracudas12
 Beauchamp Holiday Club12
 Bedford Athletic Stadium Playscheme13
 Bedford Borough Council - Summer Playschemes13
 Bedford Borough Council - Bedford14
 Bedford Modern School Activity Courses14
 Bedford School Multi Activities and Sports Courses15
 Cherry Trees Holiday Club15
 Haven 2000 Ltd16
 Holiday Adventure16
 Jelly Beans17
 Keep Playing17
 Kempston Summer Fun18
 Kidzsize Multi-Sports18
 Mini Strikers19
 Peter Pan Holiday Club19
 Polam Holiday Club20
 Shortstown Pre-School Holiday Club20
 Spice Holiday Club21
 The Manse Play Scheme21
 Warren Childcare Centre Holiday Club22
 Westbourne Playscheme22
 Youth on Adventure23

MID BEDFORDSHIRE

Arlesey Nursery School	24
Ants in your Pants	24
Boomerang	25
Flitwick Leisure Centre Holiday Activities	25
Fordfield @ Ridgmont	26
Fordfield Holiday Club	26
Hopscotch Pre-School Playscheme	27
Hypersport	27
Lawns Early Excellence and Children's Centre	28
Maple Tree Kids Club	28
Mid Beds Soccer	29
Mini Strikers	29
Phoenix School Holiday Fun Scheme	30
RAF Henlow Holiday Club	30
Run Riot with Sport and Arts	31
Silsoe Holiday Playscheme	31
Super Camps Ltd	32
Swallowbrook Playscheme	32
The Loft in Biggleswade	33
The Loft in Sandy	33

SOUTH BEDFORDSHIRE

Camp Energy - Houghton Regis	34
Dunstable Town Council Summer Playscheme	34
Fit for Sport Kids Camp - Leighton Buzzard	35
Fit for Sport Kids Camp - Dunstable	35
Linslade Child Care	36
Oscar Club	36
South Beds District Council Sports Programme	37
St. George's School Playscheme	37
St. Christopher's Care Club	38
The Playtarium	38
Watling Forest Club	39

USEFUL INFORMATION	40
---------------------------------	----

School Term Dates

Autumn Term 2007

4 September - 20 December

Half term

22 - 26 October (Inclusive)

Spring Term 2008

3 January - 20 March

Half term

11 - 15 February (Inclusive)

Summer Term 2008

8 April - 18 July

Half Term

26 - 30 May (Inclusive)

Autumn Term 2008

2 September - 9 December

Half Term

27 - 31 October (Inclusive)

Top Tips for Holiday Fun



Remember to wear sunblock, a hat and - take a drink in hot weather.



Remember your inhaler if you suffer from asthma - or any other medication required.



Remember to take a packed lunch for schemes that last all day.



Don't forget to name any items of clothing or belongings.



Don't take valuables!



Parents make sure you leave a contact number in case of emergencies.

Have FUN!

What? Autism Bedfordshire Summer Activity - Luton

Where? Rothsay Nursery, Rothsay Road, Luton

When?

Summer	October Half-Term	Christmas	February Half-Term	Easter	May Half-Term
✓					

Summertime dates 23 July - 10 August 2007

Opening times 10am - 3pm

Tell me more...4-14 years

For children with Autistic Spectrum Disorder. Offer 1 - 1 staffing ratio.

Trips out include swimming, park, bowling and indoor playground. Activities on site - crafts, entertainment, water and sand play. Packed lunch required. 30 places available. Bookings taken from 15 April 2007.

Costs £9 per day; £10.50 admin fee.

Booking details Call 01234 350704



What? Autism Bedfordshire Summer Activity - Bromham

Where? Rainbow School, Chestnut Avenue, Bromham

When?

Summer	October Half-Term	Christmas	February Half-Term	Easter	May Half-Term
✓					

Summertime dates 23 July - 10 August 2007

Opening times 10am - 3pm

Tell me more...4-14 years

For children with Autistic Spectrum Disorder. Offer 1 - 1 staffing ratio.

Trips out include swimming, park and bowling. Activities on site - crafts, entertainment, water and sand play. Packed lunch required. 30 places available. Bookings taken from 15 April 2007.

Costs £9 per day, £10.50 admin fee.

Booking details Call 01234 350704



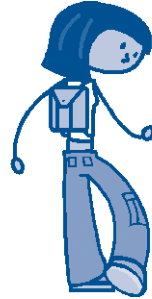
What? Bedford Mencap Summer Playscheme
Where? Springfield Lower School, Orchard Street, Kempston

When?	Summer	October Half-Term	Christmas	February Half-Term	Easter	May Half-Term
	✓					

Summertime dates 23 July - 10 August 2007

Opening times 9.30am - 3.30pm

Tell me more...4-18 years
 The playscheme is ONLY open to statemented children with a learning disability.



Costs £14 per day

Booking details Please phone

Claire Gates on 01525 716588 or
 Mike Bonney on 01234 781254



What? FUN Holiday Club
Where? Kingsland Community College

When?	Summer	October Half-Term	Christmas	February Half-Term	Easter	May Half-Term
	✓	✓		✓	✓	

Summertime dates 14, 15, 16, 21, 22, 23, 28, 29 & 30 August

Opening times 10.30am - 3.30pm

Tell me more...0-16 years
 Holiday club and activities are for the whole family. Parents must attend with their children. FUN is for families with special needs children who cannot access mainstream activities or clubs.

Costs £3 per day per child (Holiday Club)

Booking details Call Sandra on 01582 523691 or
 Tracey Franks on 01525 636680

What? Hillcrest Out of School Club
Where? Hillcrest School, Regis Educational Centre, Parkside Avenue, Dunstable

When?	Summer	October Half-Term	Christmas	February Half-Term	Easter	May Half-Term
	✓	✓		✓	✓	

Summertime dates Monday, Wednesday and Friday of first three weeks of summer holidays.

Opening times 9.30am - 4pm

Tell me more...11-19 years

This is a club for young people with severe learning disabilities. A safe, happy place where they can relax with their friends, pursue hobbies and learn new skills. Trips to the local community are an important part of this scheme. We aim to promote self esteem and confidence in all our members.

Costs £10 per day, transport extra

Booking details Call 01582 868244



What? Lea Manor Friendship Scheme
Where? Northwell Drive, Marsh Farm, Luton

When?	Summer	October Half-Term	Christmas	February Half-Term	Easter	May Half-Term
	✓	✓			✓	

Opening times 9.30am - 3.30pm

Tell me more...10-25 years

Activities include sports, crafts, cooking etc. Packed lunch required. 30 places available (1st come 1st served). All staff Community and Youth Service Qualified (varying levels). BNA nurse. Bookings by mail request - ie need to register on mailing list. email: farmerl@luton.gov.uk

Costs £6 per day to include trips and activities.

Booking details Call 01582 579714

What? National Deaf Children's Society Beds Region Playscheme

Where? Based at Alban Neve, Old Bedford Road, Luton
(Transport Available)

When?

Summer	October Half-Term	Christmas	February Half-Term	Easter	May Half-Term
✓				✓	

Opening times 10am - 3.30pm

Tell me more...5-12 years

Activities include sports - 10 pin bowling, football, trips to activity centres or farms/zoo. Packed lunch required.



Costs £3 per day

Booking details Need to become a member.
Call 01234 856955

What? Skools Out Playscheme

Where? Ridgeway School, Hill Rise, Kempston, Bedford

When?

Summer	October Half-Term	Christmas	February Half-Term	Easter	May Half-Term
✓	✓		✓	✓	✓

Summertime dates 6 - 24 August 2007

Opening times 9am - 5pm

Tell me more...8-19 years

Run for young people with physical/learning disabilities. Activities include arts, cookery, sport, sensory play, swimming and trips out locally. Staff work on 1 - 1 basis with children and are trained in all aspects of care including epilepsy, medication, communication and feeding. Packed lunch required. For full information pack please phone.

Costs Approx £2.25 per hour

Booking details Call 01234 351759



What? Sunshine Playscheme

Where? Sunnyside School, The Baulk, Biggleswade

When?

Summer	October Half-Term	Christmas	February Half-Term	Easter	May Half-Term
✓					

Summertime dates 23 July - 3 August 2007

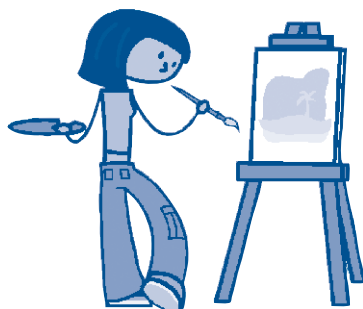
Opening times 9.30am - 3pm

Tell me more...4-13 years

The playscheme is open to any child with special needs in the local area. However careful consideration will be given to those children who have additional physical / mobility needs due to the level of staffing required. A timetable will be arranged to provide a variety of activities and outings.

Costs £11 per day plus £2 for transport if required (within 8 mile radius of Biggleswade).

Booking details Call 01767 650368 or 01767 222662 ✓



What? 4 Real Kidz Club
Where? Cauldwell Lower School, Edward Road, Bedford

When?

Summer	October Half-Term	Christmas	February Half-Term	Easter	May Half-Term
✓				✓	

Summertime dates 6 August - 31 August excluding Bank holiday Monday 27 August

Opening times 11am - 3pm

Tell me more... 8-13 years

Provides a safe, fun environment for the children to attend over the holiday period. The programme will be varied with a wide range of different activities building on life skills, confidence, team work and self esteem. Activities include sports, dance, arts and crafts and educational outings.

Costs £10 per day (limited spaces so book early).

Booking details Call 01234 301400 or email cd85@schools.bedfordshire.gov.uk



What? Acorn Holiday Group
Where? Acorn School, 15 St Andrews Road, Bedford

When?

Summer	October Half-Term	Christmas	February Half-Term	Easter	May Half-Term
✓	✓	✓	✓	✓	

Opening times 8am - 4.30pm

Tell me more... 2-8 years

Children are cared for in a bright, safe environment by caring qualified staff. Our aim is to make the children feel as 'at home' as possible. A wide range of play activities are available throughout the day as well as planned craft activities, a computer suite and a wide range of playground activities.

Costs Registration fee (covers all sessions) - £10;
 Full day (8.30am - 4.30pm) - £20;
 Morning session (8.30am - 12pm) - £11;
 Afternoon session (1pm - 4.30pm) - £11.

Booking details Call 01234 343449



What? Barracudas

Where? Dame Alice Harpur School, Cardington Road, Bedford

When?

Summer	October Half-Term	Christmas	February Half-Term	Easter	May Half-Term
✓				✓	

Summertime dates 30 July - 24 August 2007

Opening times 8am - 6pm

Tell me more...4 1/2-16 years

Barracudas activities range from archery, swimming, many different arts and crafts, bouncy castle, go karts, fencing, martial arts, drama, quad biking and so much more. A packed lunch will be required but drinks are provided throughout the day.

Costs £99 per Easter week; £119 per summer weeks.

Booking details Call 0845 123 5299 or visit www.barracudas.co.uk



What? Beauchamp Holiday Club

Where? Beauchamp Middle School, Hawk Drive, Brickhill, Bedford

When?

Summer	October Half-Term	Christmas	February Half-Term	Easter	May Half-Term
✓	✓		✓	✓	✓

Summertime dates First 5 weeks of summer holidays

Opening times 8.30am - 5.30pm

Tell me more...5-13 years

The holiday club is run by a dedicated team of two nursery nurses and university and sixth form students for 32 children each day at a ratio of 1:8. A packed lunch is required for whole day bookings. Various indoor and outdoor activities keep children interested and occupied.

Costs Half day £8.25; Full day £16; Full week £72.

Booking details Call 01234 300901 or 07875 810715 (during session only)



What? Bedford Athletic Stadium Holiday Playscheme
Where? Bedford International Athletic Stadium, Barkers Lane, Bedford

When?

Summer	October Half-Term	Christmas	February Half-Term	Easter	May Half-Term
✓	✓			✓	✓

Opening times 8am - 5.30pm



Tell me more... 8 - 14 years
 Half term consists of multi-activity sessions whilst the Summer scheme runs coached courses alongside multi-activity sessions. Morning, afternoon or all day sessions can be booked.

Costs
 Easter: £5 (8.30am - 12.30pm/1.30pm - 4.30pm)
 Summer: £30 coached session (8.30am - 12.30pm)
 £5 (1.30pm - 4.30pm).

Booking details Call 01234 351115 or pop into the stadium

What? Bedford Borough Council Summer Playschemes

Where? Various locations in and around Bedford

When?

Summer	October Half-Term	Christmas	February Half-Term	Easter	May Half-Term
✓					

Summertime dates 30 July - 24 August 2007

Tell me more...
 Bedford Bedford Park, 2pm - 4pm, 9 - 13yrs
 Wilstead Village Hall, 2pm - 4pm, 5 - 13yrs
 Clapham Scout Hut, 2pm - 4pm, 5 - 13yrs
 Roxton Parish Hall, 2pm - 4pm, 5 - 13yrs
 Brickhill Brickhill Lower School, 10am - 12 noon, 5 - 8yrs
 Stewartby Marston Vale Middle School, 10am - 12 noon, 5 - 13yrs
 Riseley Village Hall, 10am - 12 noon, 5 - 13yrs

Costs £1 per child per session

Booking details No booking required. For further information call 01234 221700.



What? Bedford Borough Council Summer Playscheme-Bedford

Where? Various locations in Bedford

When?

Summer	October Half-Term	Christmas	February Half-Term	Easter	May Half-Term
✓					

Summertime dates 30 July - 24 August 2007

Opening times 10am - 12noon and 2pm - 4pm

Tell me more...

- Kempston Daubeney Middle School, 5 - 13yrs
- Cauldwell Jubilation Centre, Jubilee Park, 5 - 13 yrs
- Putnoe Putnoe Heights Church Centre, 5 - 13yrs
- Goldington Goldington Green, 9 - 13yrs

Costs £1 per child per session

Booking details No booking required.

For information call 01234 221700



What? Bedford Modern School Activity Courses

Where? Bedford Modern School, Manton Lane, Bedford

When?

Summer	October Half-Term	Christmas	February Half-Term	Easter	May Half-Term
✓	✓			✓	

Summertime dates 16 July - 17 August 2007

Opening times 8am - 6pm

Tell me more... 4-14 years

Holiday activity courses for boys and girls. Over 40 morning and afternoon courses to choose from including climbing, creative writing, drama, cookery, survival adventure skills and a variety of sports courses.

Early / late club available.

Costs Five half-day sessions - £60;
Five full-day sessions - £120.

Booking details Call 01234 332667 or book online at www.bedmod.co.uk

What? Bedford School Multi Activities and Sport Courses

Where? Bedford School, De Parys Avenue, Bedford

When?

Summer	October Half-Term	Christmas	February Half-Term	Easter	May Half-Term
✓	✓		✓	✓	✓

Summertime dates 16 July - 31 August 2007

Opening times 8am - 5.30pm

Tell me more... 8-14 years

Open to all and a fun way to experience new and favourite sporting or art activities. Bedford School provides a stunning environment, central to town and an exceptionally high standard of care. With superb facilities, children enjoy the opportunity to try something new.

Costs From £25 upwards.

Booking details Call 01234 362319.

www.bedfordschool.org.uk/enterprises

Email enterprises@bedfordschool.org.uk



What? Cherry Trees Holiday Club

Where? Cherry Trees Children's Centre, Hawkins Road, Bedford

When?

Summer	October Half-Term	Christmas	February Half-Term	Easter	May Half-Term
✓	✓		✓	✓	✓

Summertime dates 30 July - 31 August

Opening times 8am - 6pm

Tell me more... 3-8 years

We provide a variety of fun and exciting indoor and outdoor activities led by a qualified member of staff. Different sessions available to suit you. Choose a cooked dinner (additional charge) or packed lunch. 8 places available. Book up to 4 weeks before the holidays start.

Costs £3 per hour (discount for full day).

Booking details Call Helen Letting on 01234 316433



What? Haven 2000 Ltd
Where? 78 Clapham Road, Bedford

When?

Summer	October Half-Term	Christmas	February Half-Term	Easter	May Half-Term
✓	✓		✓	✓	✓

Opening times 8am - 6pm

Tell me more...4-8 years

Children enjoy a wide range of activities from cooking and baking to craft activities and outdoor games. The Haven has a large fully enclosed garden with play equipment. All children need to bring a packed lunch.

Costs To be confirmed please call for details.

Booking details Call 01234 353566



What? Holiday Adventure
Where? Kempston Outdoor Centre, Hillgrounds Road, Kempston, Bedford

When?

Summer	October Half-Term	Christmas	February Half-Term	Easter	May Half-Term
✓	✓			✓	✓

Summertime dates 23 July - 17 August 2007

Opening times 9.30am - 4.30pm

Tell me more...9-13 years

Holiday Adventure comprises of a week of full day activity sessions including climbing and abseiling, high ropes course, canoeing and kayaking, archery and initiative challenges. Participants will have fun, overcome challenges and acquire a range of outdoor activity skills. All instructors qualified and experienced. Packed lunch required. 50 places available each week.

Costs £100 for a week of full day sessions.

Booking details Call 01234 408402 for a leaflet and booking form



What? Jelly Beans
Where? Scout Activity Centre, Molivers Lane, Bromham

When?

Summer	October Half-Term	Christmas	February Half-Term	Easter	May Half-Term
✓	✓		✓	✓	✓

Opening times Hours to suit

Tell me more...4-12 years

We are a small friendly club running to provide a range of opportunities for local children during the holidays. The club welcomes up to 16 children to join in craft activities, sports and fun and play whilst meeting friends and relaxing in a happy environment.



Costs To be confirmed please call for details.

Booking details Call Sue Smith on 01234 825152 ✓

What? Keep Playing
Where? Keep Guard Day Nursery, The West Wing, The Keep, Walcourt Road, Kempston

When?

Summer	October Half-Term	Christmas	February Half-Term	Easter	May Half-Term
✓	✓	✓	✓	✓	✓

Opening times 8am - 6pm

Tell me more...5-11 years

We provide a programme of activities both indoors and outdoors such as art & craft, cookery, music, drama, visits to the local parks & library, sports and walks. We provide a healthy snack mid-morning and during the afternoon. Children need to bring their own packed lunch (no nuts).

Costs Full day (8am - 6pm) - £20.50; Morning session - £9; Afternoon session - £7.80; Extra hour (8am - 9am/5pm - 6pm) £2.30.

Booking details Call 01234 327955 or email keepguardnursery@aol.com ✓👍

What? Kempston Summer Fun

Where? Balliol School, Kempston

When?

Summer	October Half-Term	Christmas	February Half-Term	Easter	May Half-Term
✓					

Summertime dates 23 - 27 July and 30 July - 3 August 2007

Opening times 9.10am - 3.30pm

Tell me more...6-9 years

We provide the opportunity for children to take part in sports and art based activities including swimming. The emphasis is always on fun and enjoying the activities in a safe, friendly environment. Good Ofsted report received and excellent teaching staff on site.

Costs £50 per week per child.

Booking details Obtain application form on
07703 786435



What? KidzSize Multi-Sports

Where? Various lower schools in Bedford, Ampthill and Kempston

When?

Summer	October Half-Term	Christmas	February Half-Term	Easter	May Half-Term
✓	✓		✓	✓	✓

Opening times 8.30am - 4.30pm

Tell me more...4-12 years

Each day is filled with fun and action packed sports activities, ensuring that over the week a multitude of different sporting opportunities are available to all participants. All the activities are delivered in an inclusive manner to allow everyone to enjoy the KidzSize Holiday Club to the same level.

Costs 10am - 3pm - £14.50 per day / £67.50 per week;
8.30am - 10am - £3;
3pm - 4.30pm - £3.

Booking details Call 01234 340782 or
www.kidzsize.co.uk



What? Mini Strikers

Where? Various venues

When?

Summer	October Half-Term	Christmas	February Half-Term	Easter	May Half-Term
✓					

Opening times Various

Tell me more... 2-4 years and 5-8 years

2 - 4 year olds: Fun weekly sport sessions (approx 45 mins - attendance with parent / carer) at various venues. 5 - 8 year olds: Fun weekly half day sports holiday club at various venues. Venues to be confirmed please visit www.ministrikers.co.uk or call 01525 403981.

Costs Prices to be confirmed please call for details.

Booking details Call Adam on 01525 403981 or Andy on 01908 313751

What? Peter Pan Holiday Club

Where? Peter Pan Nursery School, Edward Road, Bedford

When?

Summer	October Half-Term	Christmas	February Half-Term	Easter	May Half-Term
✓	✓		✓	✓	✓

Opening times 8am - 6pm

Tell me more... 3-8 years

A safe and secure building with a large garden. Various activities throughout the day. Packed lunch required. Bookings taken 4 weeks prior.



Costs Full day (8am - 6pm) - £20; Short day (9am - 4pm) - £18; Half day (9am - 1pm / 12pm - 4pm) - £11.

Booking details Call 01234 350864 to book or arrange a visit



What? Polam Holiday Club

Where? Polam School, Lansdowne Road, Bedford

When?

Summer	October Half-Term	Christmas	February Half-Term	Easter	May Half-Term
✓	✓	✓	✓	✓	✓

Summertime dates 23 July - 24 August 2007

Opening times 8.30am - 5.30pm

Tell me more...3 years +

An excellent range of facilities and activities making good use of our fully equipped sports hall, indoor swimming pool and large outside play area with climbing frames and playhouse. Activities include art and craft, cooking and music. We also offer soccer and cricket coaching and bouncy castle. Cooked lunch provided.

Costs 8.30am - 3.30pm (including cooked lunch)
- £23; £3.80 per hour for extra sessions to 5.30pm (includes tea).

Booking details Call 01234 261864 or 07721 723742 ✓

What? Shortstown Pre-School Holiday Club

Where? Shortstown Pre-School, Shortstown Lower School, Canberra Road, Shortstown, Bedford

When?

Summer	October Half-Term	Christmas	February Half-Term	Easter	May Half-Term
✓					

Summertime dates 30 July - 24 August 2007

Opening times 9am - 12.55pm

Tell me more...3-6 years

Lots of activities, indoor and outdoor, come and have FUN! Lunch included.



Costs £6 per session (snack and lunch included).

Booking details Call 07774 180382



What? Spice Holiday Club

Where? Goldington Middle School, Haylands Way, Bedford

When?

Summer	October Half-Term	Christmas	February Half-Term	Easter	May Half-Term
✓	✓	✓	✓	✓	✓

Opening times 8.30am - 5pm

Tell me more... 4 1/2-14 years

'Outstanding' Ofsted Inspection - 'Over and above all requirements', 'An excellent Playscheme with Outstanding Provision'. Varied fun, action-packed activities (arts, crafts, sports etc) adapted to suit all tastes / ages, including special needs. Experienced, enthusiastic and dedicated staff.

Early booking recommended. Packed lunch required.

www.spiceholidayclub.co.uk

Costs £8 per child per half day.

Booking details Call 01234 708546



What? The Manse Play Scheme

Where? The Social Centre, c/o The Manse Nursery, 4 West End Road, Stevington

When?

Summer	October Half-Term	Christmas	February Half-Term	Easter	May Half-Term
✓	✓		✓	✓	✓

Summertime dates 1st 4 weeks of Summer Holidays

Opening times 8.15am - 6pm

Tell me more... 5-10 years

At The Manse we believe that the school holidays are a time for fun so we like to create an atmosphere in which the children can make choices about how they spend their time. As the playscheme is very popular, book early to avoid disappointment. Please phone for more details.

Costs Full day - £24

Booking details Call 01234 824229 or 01234 826109 (during holidays)



What? Warren Childcare Centre Holiday Club

Where? Southfields Community Centre, Southfields Rd, Kempston

When?

Summer	October Half-Term	Christmas	February Half-Term	Easter	May Half-Term
✓	✓		✓	✓	✓

Summertime dates 30 July - 24 August 2007

Opening times 8.30am - 5.30pm

Tell me more...3-8 years

We offer fun days providing lots of art, craft and cookery activities. We have a purpose built outdoor, fenced in, play area and garden where the children can help to tend and pick the fruit. All staff are qualified. The children will need to bring a packed lunch but mid morning and afternoon snacks are provided.

Costs Full day - £20; School Hours - £15; Half day (morning or afternoon) - £12.50.

Booking details 01234 854763 (daytime) or 01234 851139 (evenings)



What? Westbourne Playscheme

Where? Westbourne Day Nursery, Westbourne Road, Queens Park, Bedford

When?

Summer	October Half-Term	Christmas	February Half-Term	Easter	May Half-Term
✓					

Opening times 9am - 5pm

Tell me more...2-8 years

Activities include art and crafts, local walks and visits, outside play, cooking, digital photography. All staff qualified. 14 places available per session. Packed lunch required.

Costs £3.50 per half day (9am - 1pm/1pm - 5pm).

Booking details Call 01234 332333 for a booking form



What? Youth on Adventure

Where? Various venues including Priory Country Park, Bedford and The Outdoor Centre, Kempston

When?

Summer	October Half-Term	Christmas	February Half-Term	Easter	May Half-Term
✓				✓	✓

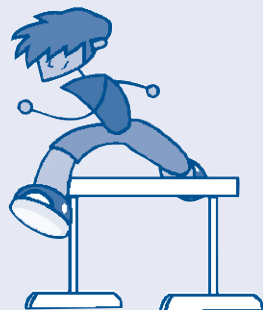
Opening times 9.30am - 4.30pm (extended hours 9am - 5pm may be available)

Tell me more... 8-14 years

Our programmes are designed to give young people a great fun time, enhancing their skills, learning new sports and getting them to work and communicate together. In the summer holidays we will be operating at the water sports centre in Priory Country Park and for the last two weeks at the Outdoor Centre, Kempston. We are a caring company with skilled and highly motivated staff.

Costs Full day - £20; 5 half day sessions - £50.

Booking details Call 07005 931400 or www.partners-in-adventure.co.uk



What? Arlesey Nursery School

Where? High St, Arlesey, Beds

When?

Summer	October Half-Term	Christmas	February Half-Term	Easter	May Half-Term
✓	✓		✓	✓	✓

Summertime dates 23 July - 17 August 2007

Opening times 8am - 5.30pm

Tell me more...3-9 years

Range of planned and organised activities with access to large and well equipped playground and garden.

Maximum 24 children to 3 staff.



Costs £3 per hour or £27.50 for a full day.

Booking details Call 01462 732168



What? Ants in your Pants

Where? Various venues across Mid Beds

When?

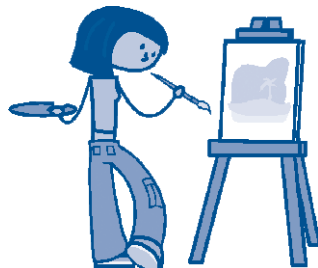
Summer	October Half-Term	Christmas	February Half-Term	Easter	May Half-Term
✓				✓	

Summertime dates 23 July - 20 August 2007

Opening times 2 hour session

Tell me more...5-8 years

Fun sport and art taster sessions, for more information please visit www.midbeds.gov.uk



Costs £3.50 per session.

Booking details Vicky on 01462 611248

What? Boomerang

Where? Memorial Hall, Biggleswade Rd, Dunton

When?

Summer	October Half-Term	Christmas	February Half-Term	Easter	May Half-Term
✓					

Summertime dates 4 weeks open out of 6 week holiday period

Opening times 8am - 5pm

Tell me more... 2½-8 years

Themed activities - cooking, gardening, jewellery making, physical activities, crafts, painting, computer, PlayStation. Breakfast provided but packed lunch required. Qualified staff. Limited places. Bookings taken beginning of June 2007.

Costs Prices to be agreed please call for more details.

Booking details Call 01767 316010 or 07941 169841



What? Flitwick Leisure Centre Holiday Activities

Where? Flitwick Leisure Centre, Steppingley Road, Flitwick

When?

Summer	October Half-Term	Christmas	February Half-Term	Easter	May Half-Term
✓	✓		✓	✓	✓

Opening times 8.45am - 4.30pm

Tell me more... 5-7 years and 8-12 years

Join us for holiday fun and meet new friends. Our qualified, experienced and enthusiastic team offer a wide range of sports, craft and fun activities in a safe and caring environment. We have 24 spaces for 8 - 12's and 16 spaces for 5 - 7's. Bookings are taken 4 weeks prior to the holidays. www.lifestylesatmidbedsc.co.uk

Costs Members - £13.50; Non-members - £14.

Booking details Book at reception from 4 weeks prior to the start of each holiday or telephone 01525 717744



What? Fordfield @ Ridgmont
Where? Ridgmont Lower School, High St, Ridgmont

When?

Summer	October Half-Term	Christmas	February Half-Term	Easter	May Half-Term
✓	✓		✓	✓	✓

Summertime dates 6 - 31 August 2007

Opening times 8am - 6pm



Tell me more...4-14 years

Fantastic place to have fun & chill out.

Creative Crafts for everyone.

Sports of every sort.

Picnics in the woods and much, much, more.

Costs Full Day - £24; Half day - £13.50
 (8am - 1.30pm / 1.30pm - 6pm).

Booking details Call 01525 405524



What? Fordfield Holiday Club
Where? Fordfield Rd, Millbrook, Ampthill

When?

Summer	October Half-Term	Christmas	February Half-Term	Easter	May Half-Term
✓	✓		✓	✓	✓

Summertime dates 6 - 31 August 2007

Opening times 8am - 6pm

Tell me more...4-8 years

Set in the grounds of Fordfield House, access to paddock and woodlands.

We have exceptionally dedicated staff, all of whom are qualified and adore children. We offer a wide variety of exciting and challenging activities. The children need to bring a packed lunch, wellies and a change of clothes. A hot tea is served at 4pm.

Costs Full Day - £24; Half day - £13.50
 (8am - 1.30pm / 1.30pm - 6pm).

Booking details Call 01525 405524



What? Hopscotch Pre-School Playscheme

Where? Rufus Centre, Steppingly Road, Flitwick

Summer	October Half-Term	Christmas	February Half-Term	Easter	May Half-Term
✓				✓	

Summertime dates 23 July - 31 August 2007
(excluding Monday 27th August 2007)

Opening times 9.30am - 12.30pm

Tell me more...3-7 years

A wide range of activities including fancy dress party, arts & crafts, sand and water play, construction toys and outdoor play area.

Website - www.hopscotch-flitwick.co.uk

Costs £6.50 per session. Buy 5 sessions and get 1 session free.

Booking details Call 01525 713061



What? Hypersport

Where? Sports Centres and Leisure Centres in Mid Beds

Summer	October Half-Term	Christmas	February Half-Term	Easter	May Half-Term
✓					

Summertime dates 23 July - 20 August 2007

Opening times 2 hr session

Tell me more...5-15 years

Sports specific coaching sessions.



Costs Please call for details.

Booking details Call Vicky on 01462 611248



What? Lawns Early Excellence and Children's Centre

Where? The Baulk, Biggleswade

When?

Summer	October Half-Term	Christmas	February Half-Term	Easter	May Half-Term
✓	✓		✓	✓	✓

Summertime dates 23 July - 17 August 2007

Opening times 7.45am - 6pm

Tell me more... 3¹/₂-10 years

Large woodland garden used all year provides plenty of fresh air and exercise. Two large sandpits, jungle trail, wildlife garden and vegetable planters. Themes: Easter - Spring / Easter; May - arts and crafts; Summer - seaside, fairy tales and mythical creatures.

Costs Half day (9.30am - 12pm / 1pm - 3.30pm) - £5.50; 7.45am - 9.30am - £2.50; 3.30pm - 6pm - £4.

Booking details Collect booking form from Lawns Early Excellence and Children's Centre ✓ 

What? Maple Tree Kids Club

Where? Maple Tree Lower School, Hawk Drive, Sandy

When?

Summer	October Half-Term	Christmas	February Half-Term	Easter	May Half-Term
✓	✓	✓	✓	✓	✓

Summertime dates Closed summer bank holiday week each year.

Opening times 8am - 6pm

Tell me more... 3-12 years

We offer fantastic fun activities at a reasonable price. We provide breakfast, tea and snacks, all you need is a packed lunch. For further information or for a visit call Maple Tree Kids Club between 3pm and 6pm weekdays.

Costs Full day (8am - 6pm) - £18.50; Half day (8am - 1pm / 1pm - 6pm) - £10.50.

Booking details Call 07950 592745 ✓ 

What? Mid Beds Soccer
Where? Various venues across Mid Beds

When?

Summer	October Half-Term	Christmas	February Half-Term	Easter	May Half-Term
✓	✓		✓	✓	✓

Opening times Various

Tell me more...5-12 years

Mid Beds Soccer provides 'second to none' holiday football coaching courses. Our promises to you, a coach to player ratio of 1:12, medals and certificates for every player, our famous shooting speed gun, and your player being coached by experienced and qualified coaches. Visit www.midbedssoccer.co.uk for our full range of venues and dates.

Costs £13 per day.

Booking details Call 01525 404274 or email bookings@midbedssoccer.co.uk

What? Mini Strikers
Where? Various venues

When?

Summer	October Half-Term	Christmas	February Half-Term	Easter	May Half-Term
✓					

Opening times Various

Tell me more...2-4 years and 5-8 years

2 - 4 years: Fun weekly sport sessions (approx 45 mins - attendance with parent / carer) at various venues.

5 - 8 year olds: Fun weekly half day sports holiday club at various venues. Venue to be confirmed please visit www.ministrikers.co.uk

Costs Prices to be confirmed please call for more details.

Booking details Call Adam on 01525 403981 or Andy on 01908 313751

What? Phoenix School Holiday Fun Scheme

Where? Flitwick Road, Westoning,
(on the side of Flitvale Garden Centre)

When?	Summer	October Half-Term	Christmas	February Half-Term	Easter	May Half-Term
	✓					

Summertime dates 30 July - 17 August 2007

Opening times 9am - 4.30pm

Tell me more...3-14 years

We provide 'individual' & group opportunities to work with stimulating materials, plaster, paint, wood, metal and natural objects. Specialist tuition with 'Mid Beds Soccer' at Flitwick Cricket Club next door. Full size 'cinema', cookery, disco and arts competitions. Team games in our beautiful garden.

Costs Full day (9am - 4.30pm) - £20; Morning (9am - 1.30pm) - £12.

Booking details Ask for year's date list & registration form on 01525 718241



What? RAF Henlow Holiday Club

Where? RAF Henlow, Beds

When?	Summer	October Half-Term	Christmas	February Half-Term	Easter	May Half-Term
	✓	✓		✓	✓	✓

Opening times 8am - 5.30pm

Tell me more...4-13 years

Fun holiday care in a safe and friendly environment. Lots to do, friends to make and games to play. Run by qualified / experienced staff morning, afternoon or all day session can be booked. Please bring packed lunch, snacks and drinks provided.

Costs Full day (8am - 5.30pm) - £16.50.

Booking details Call 01462 857483 (9am - 1pm) or 01462 851515 ext 7616 (3.30pm - 5.30pm)



What? Run Riot With Sport and Arts
Where? Various venues across Mid Beds

When?

Summer	October Half-Term	Christmas	February Half-Term	Easter	May Half-Term
✓			✓	✓	

Summertime dates 23 July - 20 August 2007

Opening times 9am - 4pm

Tell me more... 8-13 years

Run Riot with Sport and Arts will provide a structured programme that may include activities such as drama, film making, dance and creative arts and crafts. Children will also have the opportunity to take part in physical activities such as team games, football, rounders, basketball, sports tournaments, dodgeball and much more. For more information please visit www.midbeds.gov.uk

Costs £48 per child, £45 for subsequent siblings
 concessionary rates available.

Booking details Call Vicky on 01462 611248



What? Silsoe Holiday Playscheme

Where? Silsoe Lower School, Silsoe

When?

Summer	October Half-Term	Christmas	February Half-Term	Easter	May Half-Term
✓					

Summertime dates 24 July - 4 August 2007

Opening times 9am - 4 pm

Tell me more... 3-9 years

The scheme will provide 2 'arts' weeks, providing art, crafts, drama and music. For whole day sessions a packed lunch is required. Staff are qualified and experienced. There are 16 places for each session.

Costs Full day - £15; Half day - £7; Lunch - £2.

Booking details Call 01525 860247



What? Super Camps Ltd
Where? Bury Lawn School, Soskin Drive, Stantonbury Fields, Milton Keynes

When?

Summer	October Half-Term	Christmas	February Half-Term	Easter	May Half-Term
✓				✓	

Summertime dates 23 July - 24 August 2007

Opening times 8am - 6pm

Tell me more...4-13 years

Activities available - sports, arts and play. Wide range of exciting options! Packed lunch and snacks required. Staff CRB checked with wide range of experience and skills. Visit us at www.supercamps.co.uk



Costs Prices from £28 per day and from £124 per week.

Booking details Call 01235 832222



What? Swallowbrook Playscheme
Where? Community Centre, Station Road, Woburn Sands, Milton Keynes

When?

Summer	October Half-Term	Christmas	February Half-Term	Easter	May Half-Term
✓	✓		✓	✓	✓

Summertime dates 23 July - 31 August 2007

Opening times 8.30am - 6pm

Tell me more...4-12 years

Arts and crafts, outdoor play, parks, trips, snooker/pool, computers, PlayStation, cooking, quiet reading corner, drama, free play and much more. Packed lunch required but morning and afternoon snacks provided. Qualified and experienced staff.

Costs Full day (8.30am - 6pm) - £20; Half day (8.30am - 1pm / 1pm - 6pm) - £10; Registration Fee (for non-members) - £10.

Booking details Call Tina on 07843 410647 or Jane 07725 481643



What? The Loft in Biggleswade

Where? Toybox Day Nursery, The Saxon Centre, Kingsfield Road, Biggleswade

When?

Summer	October Half-Term	Christmas	February Half-Term	Easter	May Half-Term
✓	✓	✓	✓	✓	✓

Opening times 8am - 6pm

Tell me more...5-12 years

A range of art and craft activities, cooking, field trips / outings, weekly topics / themes. Qualified staff. Bookings taken in advance of holidays minimum 2 weeks.

Costs Full day (8am - 6pm) - £26.75
Full week - £107;
Half day (8am - 1pm / 1pm - 6pm) - £16.

Booking details Call 01767 313139



What? The Loft in Sandy

Where? Toybox Day Nursery, Medusa Way, Sandy

When?

Summer	October Half-Term	Christmas	February Half-Term	Easter	May Half-Term
✓	✓	✓	✓	✓	✓

Opening times 8am - 6pm (7am - 7pm at an extra cost)

Tell me more...5-12 years

Light breakfast, snacks and tea included - packed lunch required in holidays or home cooked lunch provided for a small charge. Fun variety of indoor and outdoor activities all run by experienced staff and we have outings on our mini bus too. Please call for registration and booking information or to arrange a visit.

Costs Full day (8am - 6pm) - £25 (full 5 day week - £100); Half day (8am - 1pm / 1pm - 6pm) - £15.

Booking details Call 01767 683602



What? Camp Energy - Houghton Regis

Where? Houghton Regis Leisure Centre, Parkside Drive, Houghton Regis

When?

Summer	October Half-Term	Christmas	February Half-Term	Easter	May Half-Term
✓	✓	✓	✓	✓	✓

Opening times Dates and times vary, please contact centre for information

Tell me more...3-12 years

Mini Camp Energy 3-7yrs: Fun and games with arts, crafts, bouncy castle and face painting. Camp Energy 8yrs+: Fun and games including swimming, sports, arts, crafts and lots more.

Costs Mini Camp £3.35 (members), £3.90 (non members), Camp Energy £4.50 (members), £5.05 (non members).

Booking details Call in or phone 01582 866141



What? Dunstable Town Council Summer Playscheme

Where? Queensbury Upper School, Priory House

When?

Summer	October Half-Term	Christmas	February Half-Term	Easter	May Half-Term
✓					

Summertime dates 23 July - 17 August 2007

Opening times 10.15am - 12pm (5 - 8 yrs)
1pm - 4pm (9 - 13 yrs)

Tell me more...5-8 years (am) and 9-13 years (pm)

Scheme will operate Mon - Fri from 23 July - 17 August. Admission fees will be £1.50 for the first child and 75p for subsequent children from the same address. Activities include arts, craft, sports, tennis coaching, children's entertainment plus much more.

Costs £1.50 and 75p.

Booking details Call 01582 513000.

Pre-registration available.



What? Fit for Sport Kids Camp

Where? Tiddenfoot Leisure Centre, Mentmore Road, Leighton Buzzard

When?	Summer	October Half-Term	Christmas	February Half-Term	Easter	May Half-Term
	✓	✓	✓	✓	✓	✓

Summertime dates 23 July - 31 August 2007



Opening times 9.30am - 4.30pm
(option of early drop off 8.30am and late pick up 5.30pm)

Tell me more... 3-14 years

Every day, children will take part in three sport activities (multi-sports, football, cricket, tennis, basketball, rounders etc) and one chill out activity.

Costs £20 per day (if you book before 20th June).
£26 per day or £110 per week.
(Sibling discount of 25% on all full week bookings)

Booking details Call 0845 456 3233 Email enquiries@fitforsport.co.uk
Website www.fitforsport.co.uk

What? Fit for Sport Kids Camp

Where? Dunstable Leisure Centre, Court Drive, Dunstable

When?	Summer	October Half-Term	Christmas	February Half-Term	Easter	May Half-Term
	✓	✓	✓	✓	✓	✓

Summertime dates 23 July - 31 August 2007

Opening times 9.30am - 4.30pm
(option of early drop off 8.30am and late pick up 5.30pm)

Tell me more... 3-14 years

Every day, children will take part in three sport activities (multi-sports, football, cricket, tennis, basketball, rounders etc) and one chill out activity.

Costs £20 per day (if booked before 20th June).
£26 per day or £110 per week.
(Sibling discount of 25% on all full week bookings.)

Booking details Call 0845 456 3233
Email enquires@fitforsport.co.uk
Website www.fitforsport.co.uk



What? Linslade Child Care

Where? Linslade Lower School, Leopold Road, Linslade, Leighton Buzzard

When?

Summer	October Half-Term	Christmas	February Half-Term	Easter	May Half-Term
✓	✓		✓	✓	✓

Summertime dates 30 July - 24 August 2007

Opening times 8.30am - 5.30pm

Tell me more...5-12 years

Craft clay, plaster of paris, tie dying etc. Supervised access to computer games. Outdoor activities - basketball, football, mini tennis, swing ball etc. Packed lunch required for full day and afternoon sessions. Maximum children, 40/session. At least half of staff are qualified.

Costs 8.30am - 12.30pm - £10.80; 12.30pm - 5.30pm - £13.50; Full day - £19.80.

Booking details Pick up booking forms from Linslade Childcare or phone 07957 751919 ✓ 

What? Oscar Club

Where? Taywood House, Clipstone Brook Lower School, Brooklands Drive, Leighton Buzzard

When?

Summer	October Half-Term	Christmas	February Half-Term	Easter	May Half-Term
✓	✓	✓	✓	✓	✓

Opening times 8am - 6pm

Tell me more...3-13 years

Various age appropriate games and activities. Children need a packed lunch and a drink for lunch time. Snacks and drinks are provided mid-morning and afternoon.

Costs 1st child 8-9am - £3; 9am-1pm - £10; 1pm-5pm - £10; 5pm -6pm - £3.

2nd child 8am-9pm - £2.50; 9am-1pm - £8; 1pm-5pm - £8; 5pm-6pm - £2.50.

Booking details Call 01525 376314 ✓ 



What? South Beds District Council Summer Holiday Sports Programme

Where? Venues across South Beds

When?

Summer	October Half-Term	Christmas	February Half-Term	Easter	May Half-Term
✓					

Opening times Varies



Tell me more... 8-18 years

The South Beds Holiday programme offers the children who live in South Beds the opportunity to participate in fun sports activities in a safe environment. All coaches/instructors are fully qualified and CRB checked.

Costs Varies.

Booking details Call 01582 474095

What? St George's School Playscheme

Where? 28 - 30 Priory Road, Dunstable

When?

Summer	October Half-Term	Christmas	February Half-Term	Easter	May Half-Term
✓	✓	✓	✓	✓	✓

Opening times 8am - 6.30pm

Tell me more... 2-11 years

The children will have the opportunity to take part in a full range of leisure activities including: drama, art and craft, music, sports, and indoor games in a safe, secure environment with qualified staff.

Costs Depends on length of day and number of days per week attended.

Booking details Call 01582 661471



What? St. Christopher's Care Club

Where? St. Christopher's Lower School, Gorham Way, Dunstable

When?

Summer	October Half-Term	Christmas	February Half-Term	Easter	May Half-Term
✓	✓		✓	✓	✓

Opening times 7.45am - 5.30pm

Tell me more...3-11 years

Activities include cooking, craft, computers, PlayStation. Outdoor activities include basketball, football, bikes, scooters, climbing frame, sand and water. Qualified staff running the scheme. Packed lunch required.

Costs £2.60 per hour or £20 per day.

Booking details Call 01582 702333



What? The Playtarium

Where? Hillborough Junior School, Hillborough Road, Luton

When?

Summer	October Half-Term	Christmas	February Half-Term	Easter	May Half-Term
✓	✓	✓	✓	✓	✓

Opening times 8am - 6pm



Tell me more...4-12 years

The Playtarium offers excellent childcare for the holidays, we keep the children entertained with many activities using weekly themes. Activities include sports, team games, arts, crafts and trips out. Children need to bring a packed lunch. Our staff are very experienced and over half of them are qualified.

Costs £19 first child.

Booking details Email june.wilson@beds.ac.uk

What? Watling Forest Club

Where? Watling Lower School, Bullpond Lane, Dunstable

When?

Summer	October Half-Term	Christmas	February Half-Term	Easter	May Half-Term
✓	✓	✓	✓	✓	✓

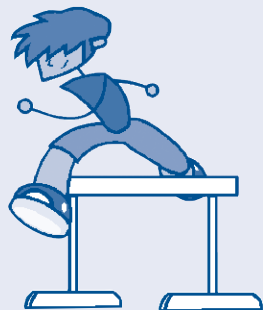
Opening times 8am - 6pm

Tell me more... 4-12 years

Forest Club is open to all the community and offers activities designed for all ages - these include arts, crafts, cookery, outdoor games, computers, construction toys, board games and lots more. Packed lunch / tea required. 40 places available. Qualified and dedicated staff.

Costs £21 per child - 8am - 6pm or £13.50 per child - 9am to 3.30pm.

Booking details Call 01582 614434



Looking for childcare?

INFORM 0-19 provides free information, advice and support to parents and carers on childcare, activities, family support services and other child or family related issues.

Contact us:

Telephone: 0800 023 2057

Line opens Mon - Fri, 8 am - 5.15 pm
(24-hour answerphone)

Email: inform0-19@bedscc.gov.uk

Website: www.childcarelink.gov.uk/bedfordshire

Looking for a career in childcare?

For information and advice on a career in childcare, early years or playwork please call the Childcare Recruitment Helpline on 01234 228847.

Help with Childcare Costs!

If you are a working parent or thinking about returning to work, you could be entitled to money from the government to help pay for childcare cost. Call the Tax Credit Helpline on 0845 300 3900.

Are you a lone parent?

If you are a lone parent and thinking about returning to work, you can obtain help and support from your local lone parent adviser. Please call to make an appointment with your local adviser:

Bedford 01234 361540

Dunstable and Leighton Buzzard 01582 685218

Biggleswade 01767 685723



INFORM 0-19

Information service
for parents and carers
of children and young
people aged 0-19 years

- Childcare and early years services
- Sports, leisure and holiday activities
- Local support services



Bedfordshire



INFORM 0-19 To find out more about INFORM 0 -19
0800 023 2057 or visit www.childcarelink.gov.uk/bedfordshire